



Widearea Systems, Inc.

A Convergence Technology Company

Contact Information

Widearea Systems, Inc.
201A Broadway Street
Frederick, MD 21701
301-418-6180 office
301-418-6001 fax

info@wideareasytems.com
www.wideareasytems.com

Type of Entity

Maryland C corporation

Ownership

Shareholders who are US citizens

Year Founded

2001

Products

V-Contax: Visual Contact Center solution

VC Wizard: Video Conference Scheduler and Manager

W-TEN: Family of Secure Thin Client solutions

Services

W-ISN: Interpretive Services
EZ Scheduler: Upscale room based meeting scheduler
<http://www.ezschedulers.com>

Company Overview: Widearea Systems (“Widearea”) is a convergence technology company that provides Unified Communications (UC) solutions and services to enterprises and government agencies. Widearea currently has three product lines:

- V-Contax, a visual contact center solution;
- VC Wizard, a video conference scheduling and management solution; and
- Widearea-Trusted Enterprise Network (W-TEN), a family of secure client solutions designed to meet the most stringent security requirements.

Additional capabilities including:

- Voice over IP (VoIP) Implementation and Management;
- Video Tele Conferencing (VTC) Implementation and Management;
- Interpretive Services over VTC;
- Remote Training Implementation over VTC;
- Video and Audio Collaboration for Telecommuters;
- Network Security Assessment and Implementation;
- Server Virtualization Planning and Implementation;
- Secure Thin Client Implementation and Management; and
- Staff Augmentation for IT Development and Operation

Widearea is a Small Disadvantaged Business (SDB) certified by the Small Business Administration (SBA) founded in 2001 by Choon Shim, a proven, successful technology entrepreneur and a published author on IP security and telecommunication.

The Widearea Systems Products and Solutions

Widearea Systems currently has three product families. V-Contax is a revolutionary visual contact center solution. VC Wizard is a robust video conferencing, scheduling and management solution. TMN is a protected thin client solution for classified and unclassified networks.

V-Contax: V-Contax revolutionizes the way companies interface with their customers and has the capability to become the major platform for interactive customer relationship management (CRM). V-Contax enables companies to combine their customer service web-site interactions between customers and Customer Service Representatives over the internet. V-Contax integrates directly to the CRM software and other back office systems. V-Contax dramatically improves customer satisfaction by providing a superior experience and provides enterprise customers with clear and significant returns on their investment. Markets include call centers, customer service centers, universities, product companies with online help desk systems and interpretive services providers.

VC Wizard: VC Wizard is a ‘carrier-grade’, mature, reliable and robust proprietary software product that enables companies to schedule and manage multipoint video conferences. VC Wizard is scalable and secure, partitions clients (multi-tenant) and works with all key hardware vendor equipment. The benefits of video conferencing are

NAICS Codes

511210
 518210
 541511
 541512
 541519
 541990
 611420

CAGE Code

4EBP1-5
 43LG8-5

Dun Number

087326802

Unified Communications Products and Technology

V-Contax: Visual Contact Center solution

VC Wizard: Video Conference Scheduler and Manager

NYTOR TMN: secure thin client solutions that provide access to multiple classified and unclassified networks

Substantial additional intellectual property to manage secure Unified Communications solutions

Professionals

Corporate Legal – Duane Morris

IP Legal – Duane Morris

Commercial Bank – BB&T

Accounting – McLean, Koehler, Sparks and Hammond

Past Performance

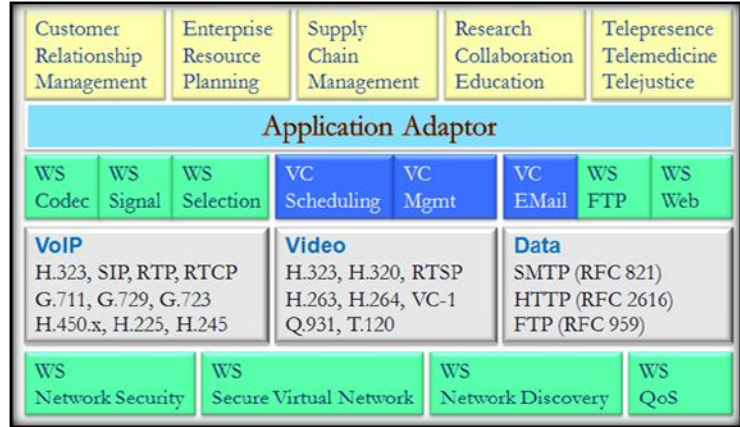
Veterans Administration



U.S Army

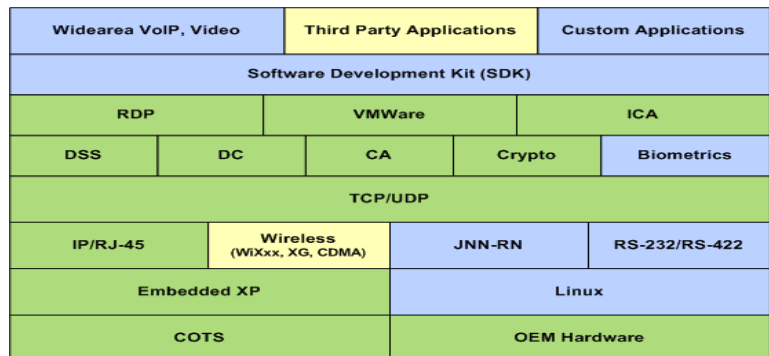


economic climate, improvements in video conferencing equipment and the well-known challenges of business travel are driving the increasing demand for video conferencing. Wainhouse Research states that the conferencing and collaboration industry today is in a period of unprecedented growth and estimates the total market for factory revenues of all conferencing technologies including audio, video, and web conferencing at \$8 billion in 2008 and projects it to grow to \$10 billion in 2012. The following diagram illustrates the Widearea intellectual properties and supporting protocols:



Widearea-Trusted Enterprise Network (W-TEN): W-TEN is a family of thin client devices and integrated solutions that can be rapidly configured and installed to customer requirements. The W-TEN solutions are available in several configurations to meet diverse client needs and deliver superior performance. The W-TEN solutions are economical to purchase and operate. Low power requirements, increased workstation life and centralized administration all result in significant cost savings.

The W-TEN thin client solution supports a product, which in conjunction with the W-TEN architecture provides secure access capability and multiple classification domains simultaneously. W-TEN will replace several PCs with a single thin client. The client uses smart cards for authentication, IPsec VPN tunneling technology to send information over a single cable, stores no data on the thin client, allows session portability and permits the user to run advanced applications such as video streaming. W-TEN allows reuse of most legacy equipment and only requires Microsoft certified administrators. W-TEN costs less than one fourth to implement and maintain than non-windows solutions. The following diagram illustrates the architecture of W-TEN V2.0:



Using its products and intellectual property, Widearea has developed a number of solutions in attractive, growing markets. These solutions include the Widearea Interpretive Services Solution, the Widearea Secure Electronic Medical Record (WSEMR) access solution, the Widearea Tele-Office Solution and the Widearea Tele-Ed Solution.



Sample Customers



State of MN



University of Texas Health



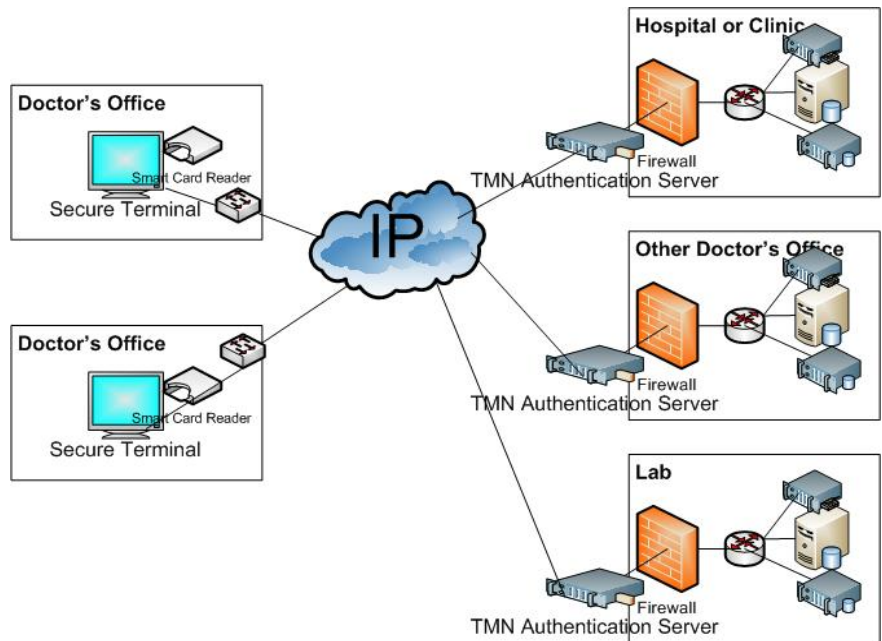
State of Ohio



Widearea currently has the following solutions:

The Widearea Secure Electronic Medical Records Access Solution

Our Electronic Medical Records access solution (WSEMR) provides secure access to medical records. Using similar security measures that are used by government officials, appropriate medical personnel could administer care for the patient accordingly, based on the information found. Widearea understands the importance of physicians' needs to be efficient and able to access CT and MRI images. With TMN, there is no extra cost involved in obtaining this hardware. Most hospitals are already electronically enabled and this thin client system can be easily added to their networks. Implementing TMN technology will also ensure that sensitive information could not be copied, downloaded or tampered with. The following diagram illustrates how TMN could be used in the medical field:



The Widearea Tele-Office Solution

Our turn-key based solution provides remote enterprise mobility access for enterprises and government agencies. The Tele-Office solution focuses on creating a productive business asset based on individual intellect and expertise, not buildings. The solution consists of leading edge IT technologies and services by Widearea Systems and its Widearea Systems Alliance Program (WSAP) partners. Key components of the Tele-Office Solution, V-Contax, VC Wizard and TMN, enable state of the art security applications for use with any mobile enterprise.

Americans are on the move and remote access business functions through Tele-Office are a critical tool in the distributive nature of business in the twenty-first century. Tele-Office provides individuals with the capacity to access and work on their office computer or company systems from anywhere there is a broadband Internet connection. Work groups can meet from multiple locations with enhanced communication using face-to-face interaction capabilities included in the Tele-Office video conferencing functions. Tele-Office extends the reach of the user from across the corporate campus and into hotel rooms, conference centers and even WiFi hotspots. This networking enables employees to work where they can be most effective maintaining close communications with customers, associates, supervisors, and corporate headquarters.

The Widearea Tele-Ed Solution

Our Distance Learning solution enables educational institutions to deliver educational content via video and to enable students to take tests remotely while ensuring that the test-taking individual is the actual student. Our Tele-Ed Solution utilizes video conferencing management and scheduling capability in conjunction with positive recognition of each student. Our Tele-Ed Solution enables educational institutions to

Palm Beach County



State of Florida



SBC

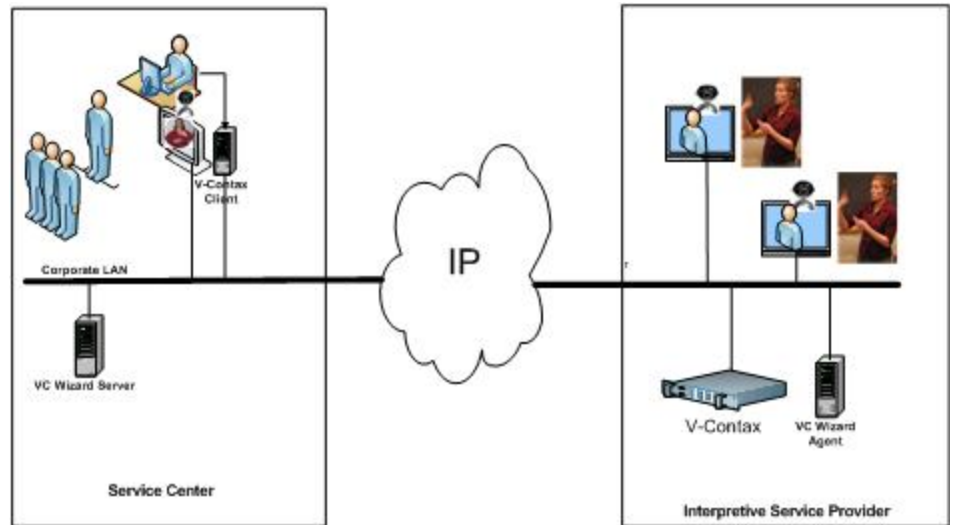


San Joaquin Valley



Widearea-Interpretive Services Network (W-ISN)

Our turn-key based solution provides remote interpretive services for enterprises and government agencies. Our solution consists of leading edge IT technologies and services by Widearea and its Widearea Systems Alliance Program (WSAP) partners. V-Contax is a key component of the solution and provides IP connectivity, waiting queues, and status of contact centers operated by Widearea partners. VC Wizard is another component for the solution to manage video conferencing equipment and track their usage. VC Wizard automatically turns on IP based video conferencing terminals when an interpreter is ready. VC Wizard prints out usage reports for accounting purposes. Interpreters are provided by our WSAP partners. Our WSAP partners operate their services with V-Contax for call dispatching. The following diagram demonstrates WSAP:



Widearea Professional Services In addition to the software and hardware products, and the solutions, Widearea's full-solution capabilities are backed by our vast and ever-increasing knowledgebase and experience with some of the world's most demanding and discerning customers. Widearea services are designed to help customers stay ahead of their customer's demands for faster and better IT services.